

# TRANSMISSION

**A MEDIA ICON  
REINVENTED  
FOR MODERN  
INDUSTRY**

**ENTERPRISE CITY®**





# CONTENTS

**04 History**

**08 Introduction**

**17 Enterprise City**

**22 Design**

**38 Technical**

**46 Location**

**50 Contact**



A new workspace approach in the city's fastest growing district: Enterprise City.

**Welcome to  
Transmission.**

# AN ICONIC BUILDING...



Old Granada Studios is a historic and iconic piece of Architecture. The Transmission building has been designed to build upon and enhance the existing Ralph Tubbs designed 1959 Granada HQ building. The legacy of filming at the Studios will be continued and the Transmission building provides modern workspace for the creative and media industries.



# ...A BOLD NEW STATEMENT

Original Granada TV HQ building  
image ©ITV Granada



# GRANADA

**A true Manchester  
landmark brimming with  
history and heritage.**

— EST 1954 —





***TRANSMISSION***

TRANSMISSION



Exterior CG view of Transmission.



**A MEDIA ICON  
REINVENTED  
FOR MODERN  
INDUSTRY**



**BUILT ON  
HISTORY...**

**...TO DEFINE A  
NEW FUTURE**





# TRANSMISSION

**C**reative spaces for modern working, spaces for modern socialising. Places of collaboration and innovation, from flexible floors to start-up studios, imagine a place that challenges your perceptions of the workplace.

**THIS IS  
'TRANSMISSION'**





# A NEW WORKSPACE APPROACH IN THE CITY'S FASTEST GROWING DISTRICT



# ENTERPRISE CITY

**ENTERPRISE CITY IS AN INSPIRATIONAL NEW DISTRICT OF THE CITY, WITH EXCEPTIONAL WORKSPACES, INSPIRING CULTURAL SPACES, AND BESPOKE CITY CENTRE LIVING.**

It's a media, tech and creative cluster designed to connect people and businesses, encourage collaboration, and create success through expert place-making.

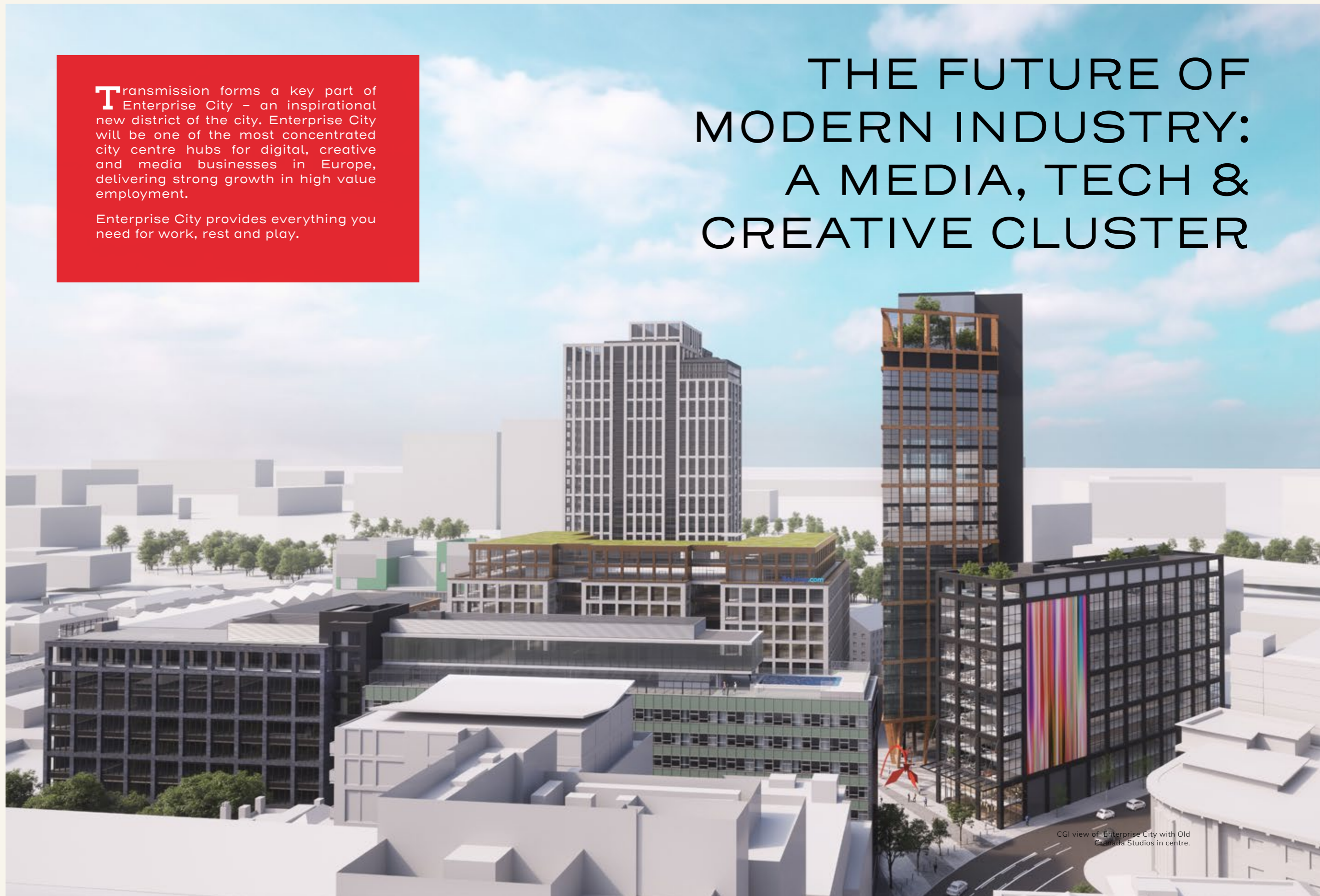
Enterprise City provides a series of tech-driven and creative buildings where modern industry can flourish by focusing on digital skills, exemplary talent, new technologies and global communication.



**T**ransmission forms a key part of Enterprise City – an inspirational new district of the city. Enterprise City will be one of the most concentrated city centre hubs for digital, creative and media businesses in Europe, delivering strong growth in high value employment.

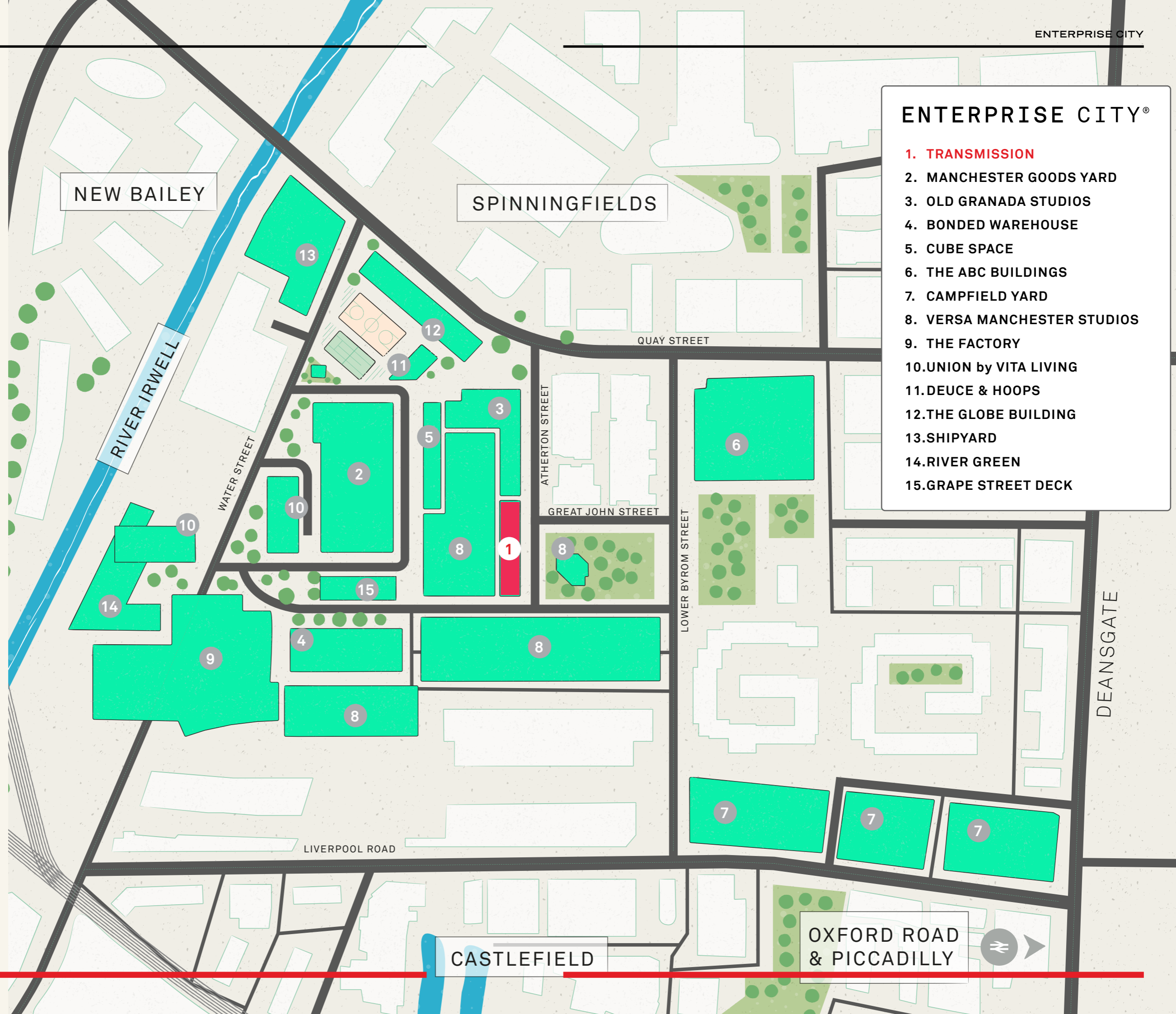
Enterprise City provides everything you need for work, rest and play.

# THE FUTURE OF MODERN INDUSTRY: A MEDIA, TECH & CREATIVE CLUSTER



CGI view of Enterprise City with Old Granada Studios in centre.

# TRANSMISSION AT ENTERPRISE CITY



# NEW DESIGN



## WORKSPACE DESIGN

Inspired by sci-fi cinema, technology and the natural environment, Transmission delivers workspaces that are clean, fresh and innovative. Specifically created to support the media and creative industries, the Transmission workspaces are double-height galleries designed as ultra-flexible interconnected studios to create spacious and airy facilities flooded with natural light.

# BIO PHI LIC

## IMPROVING HEALTH, WELLBEING, PRODUCTIVITY & CREATIVITY

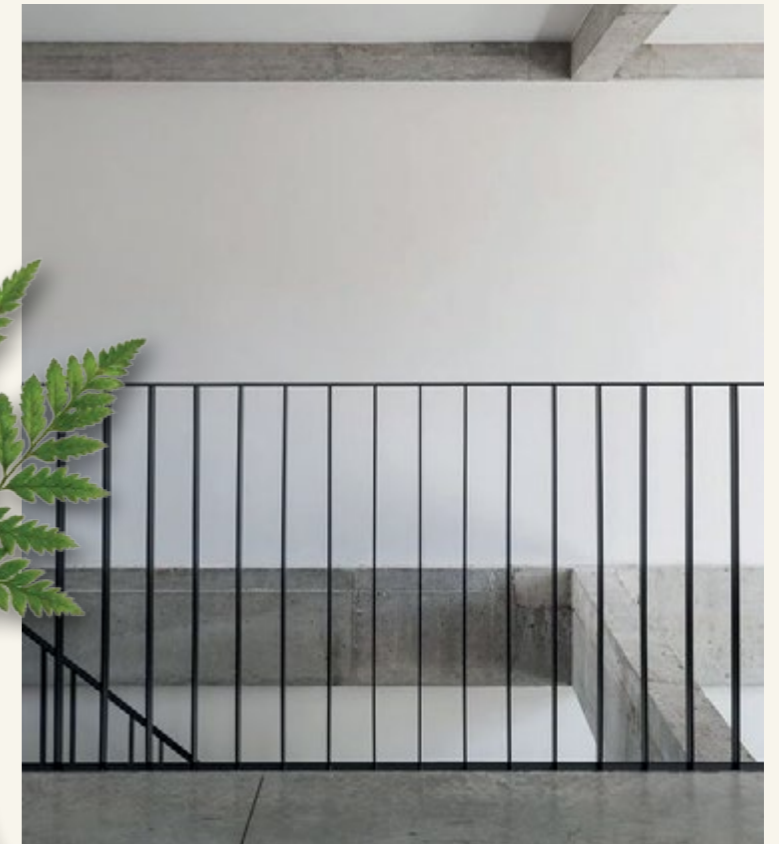
**T**ransmission is aesthetically designed for people and comfort, it's taken the human centred approach to improving health and wellbeing in the workplace.

By designing the building with strong biophilic principles Transmission is the perfect environment for work and collaboration. With spacious and airy facilities the building contributes to a healthy environment that can reduce stress, improve productivity and creativity, it can also aide clarity of thought. Even small biophilic adjustments to the workplace have been shown to help the overall wellbeing of staff.

# SUSTAINABLE DESIGN & BUILD



# WORKSPACE LOOK & FEEL.



# DUAL ASPECT WORKSPACES

## VIEWS ACROSS THE CITY



Visual concept of typical workspace entrance.



# AESTHETICALLY DESIGNED FOR PEOPLE & COMFORT

Visual concept of typical workspace.



# A NEW PLACE FOR

**WORKING**

**COLLABORATING**

**CONNECTING**

**CREATING**

**DISCOVERING**

**INNOVATING**

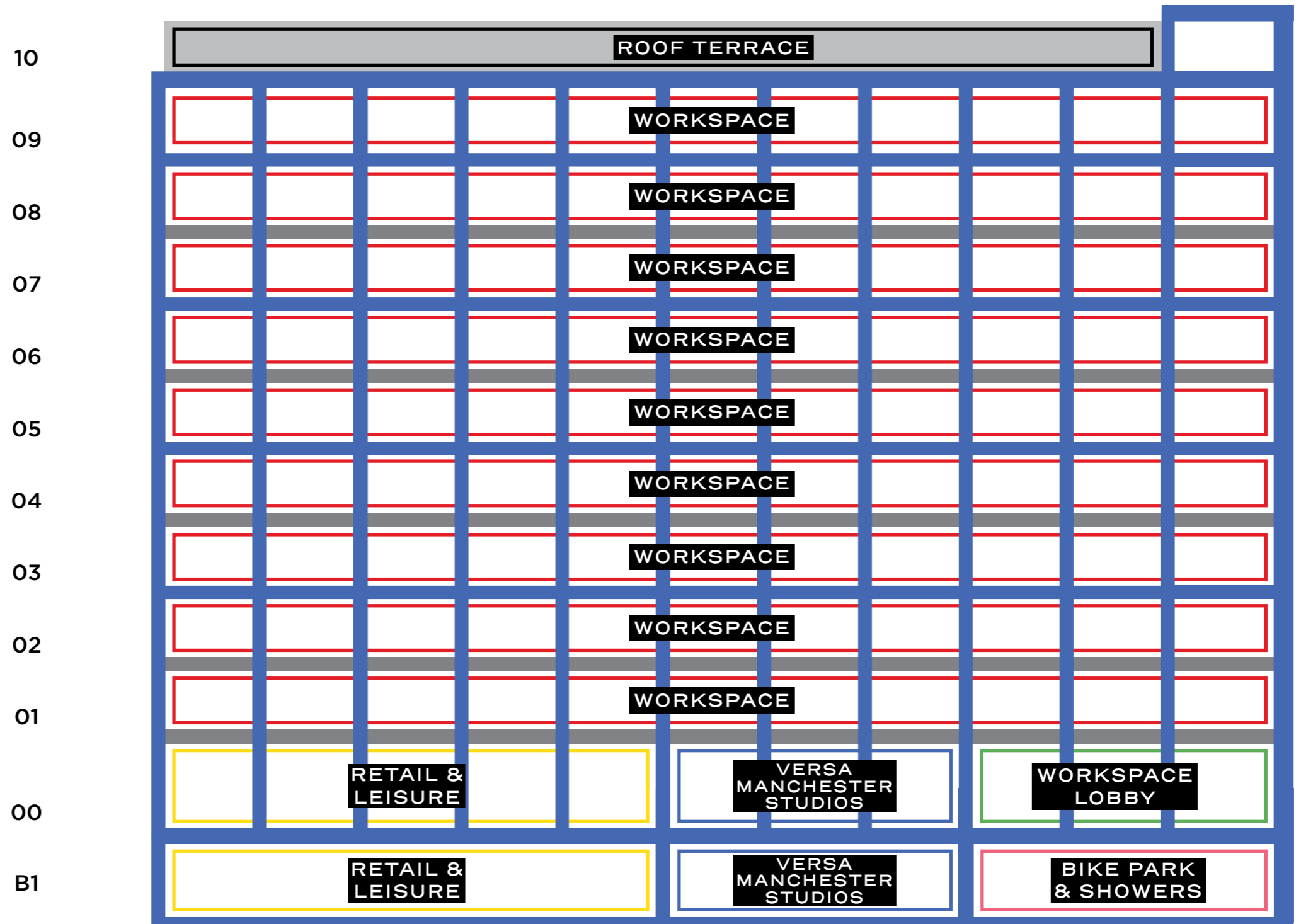
**TRANSMITTING.....**



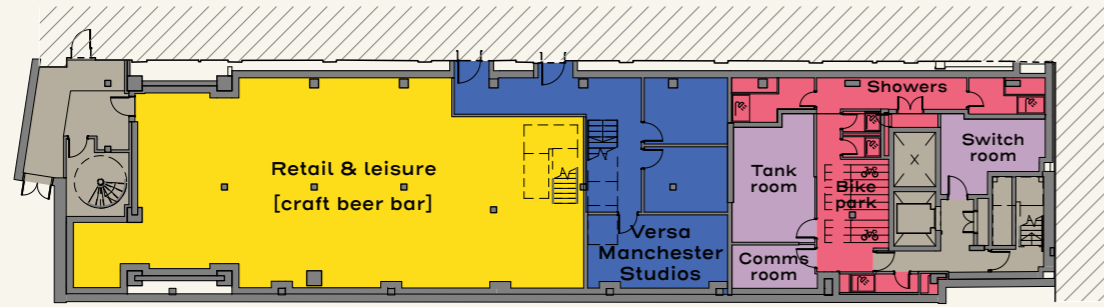
CG view of the lobby at Transmission.



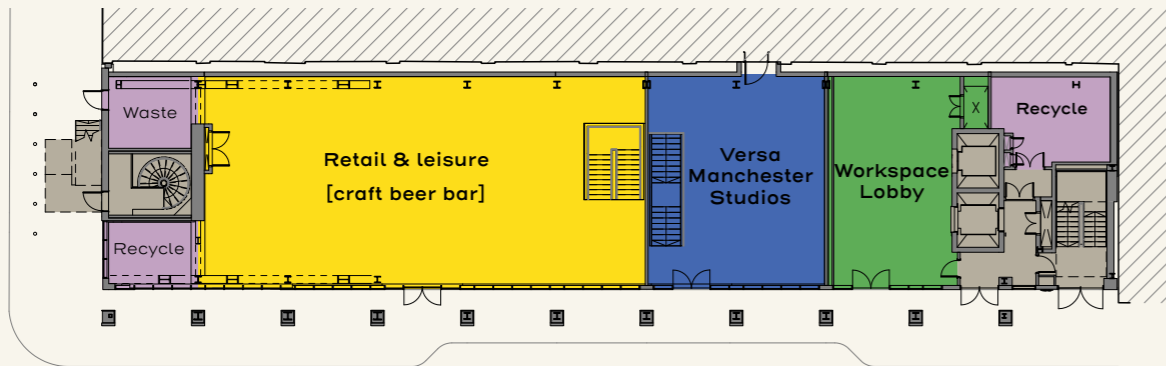
# TECHNICAL



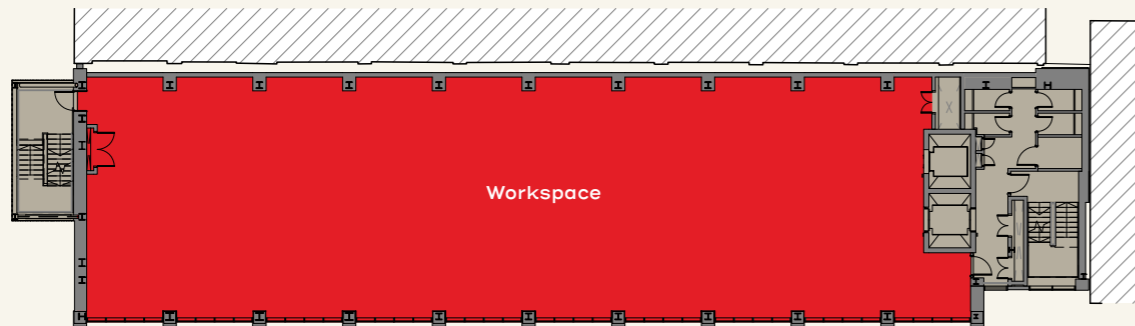
BASEMENT



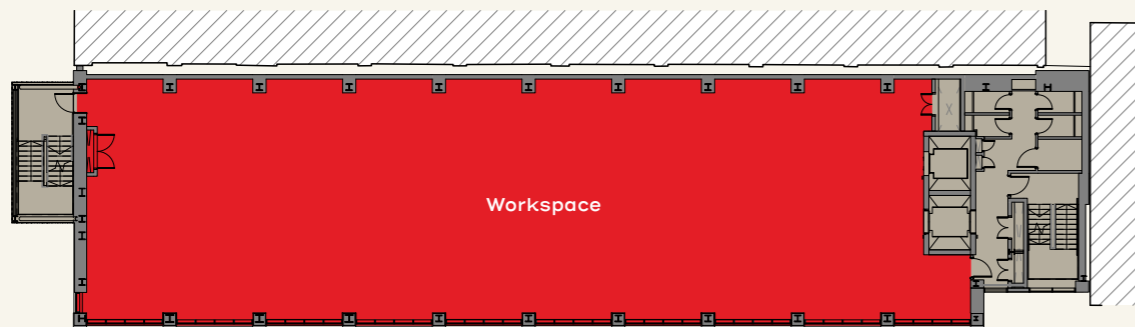
GROUND LEVEL



LEVEL ONE



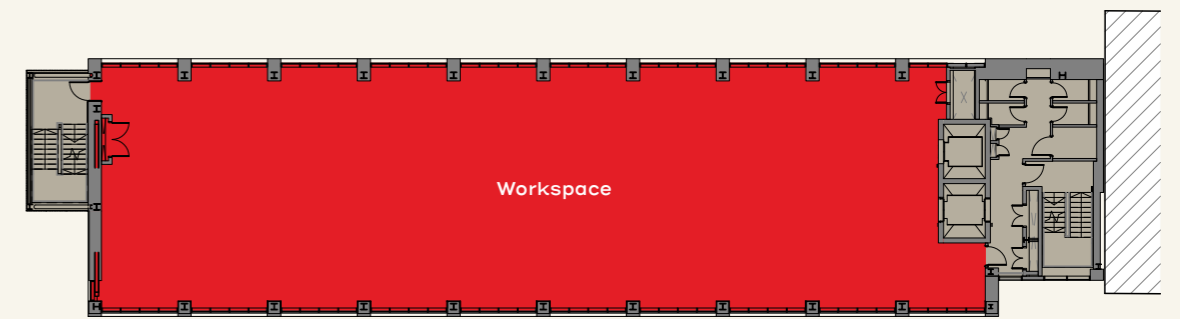
LEVEL TWO



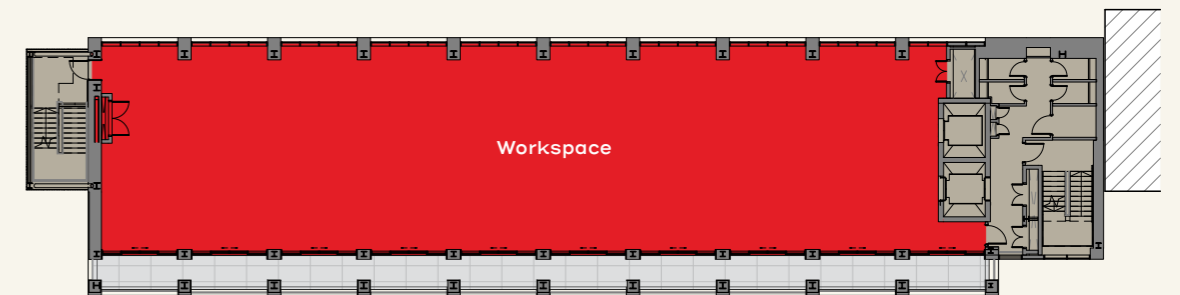
LEVEL THREE



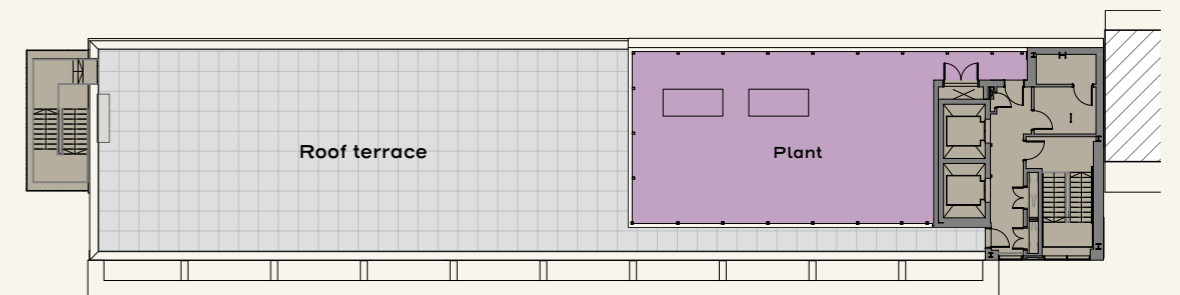
LEVEL FOUR TO EIGHT



LEVEL NINE

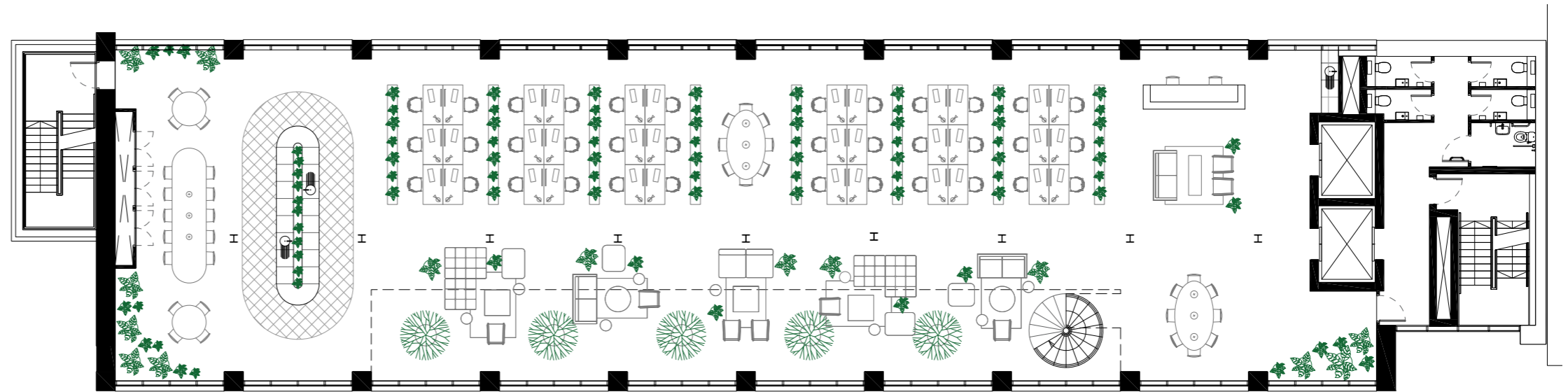
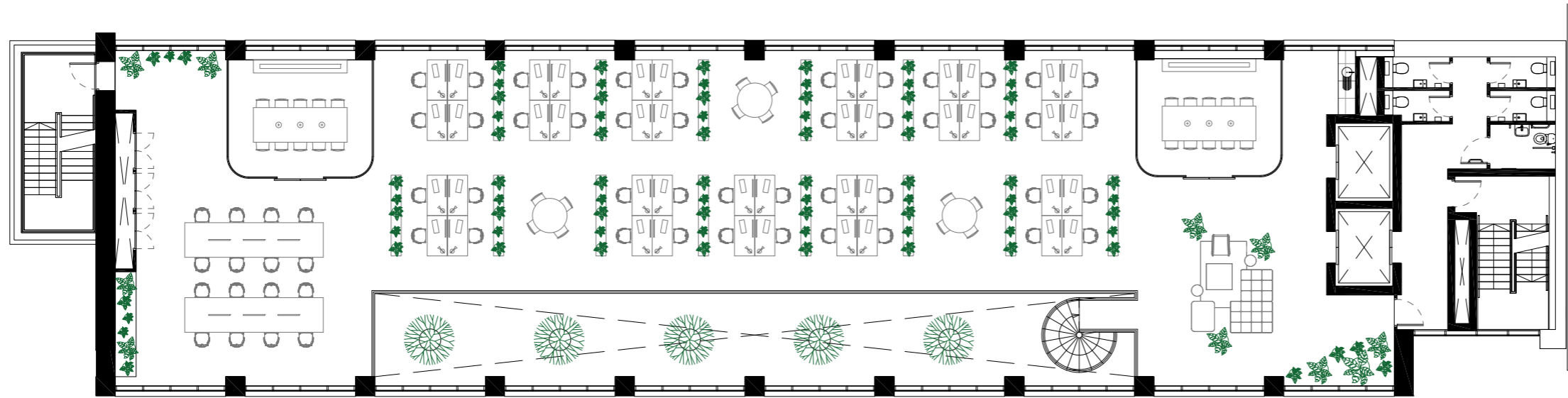


LEVEL TEN



FLOOR PLANS

# TYPICAL UPPER GALLERY LEVEL



# SPACE PLANS

**T**ransmission allows its residents to create their own bespoke workspaces with innovative configurations such as our studio gallery concept. The building gives tenants the ability to design interconnected floor plates in the form of open work galleries. Each duplex office floor can be joined by removing a section of the floor to create a statement staircase.

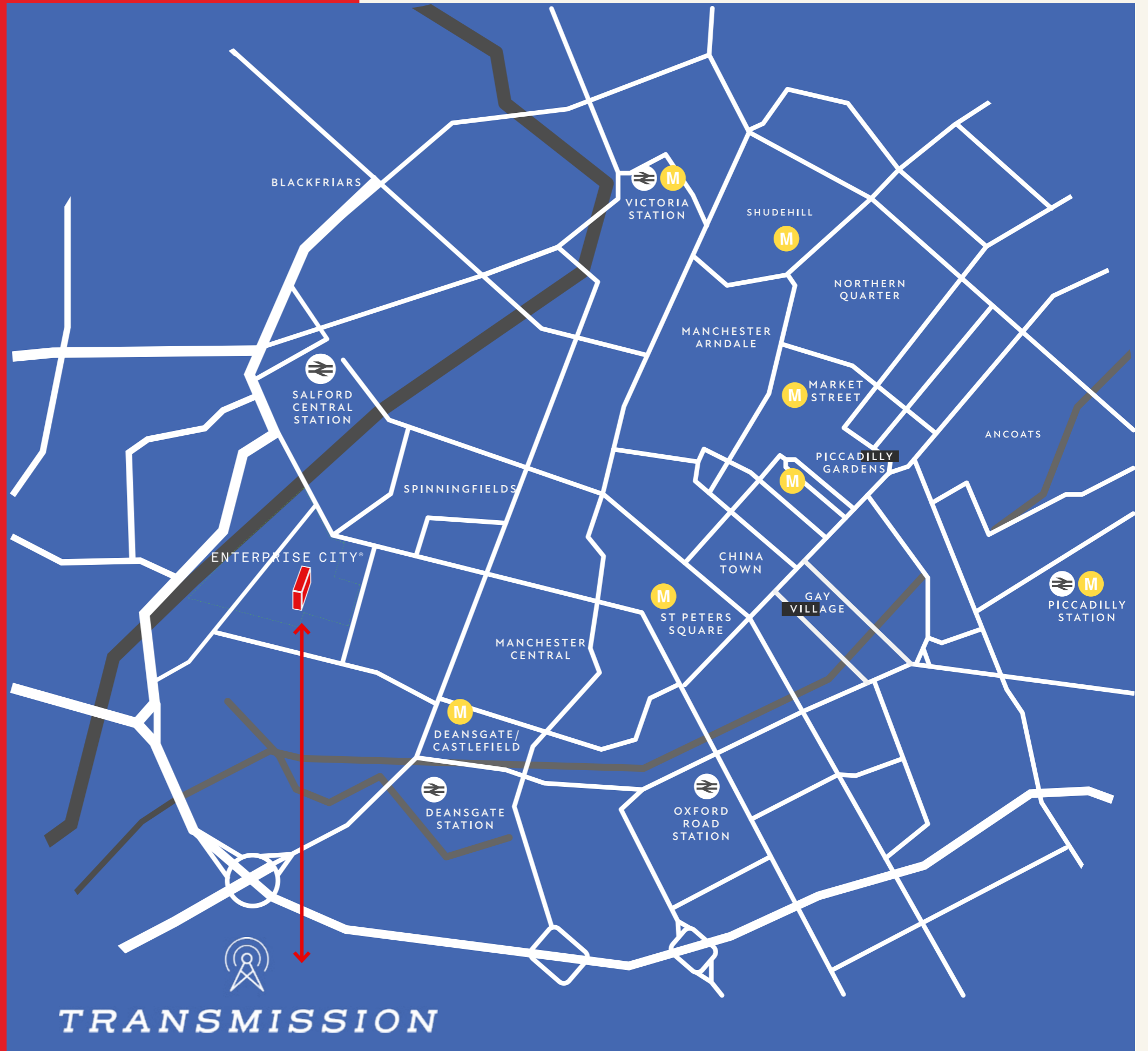
# TYPICAL LOWER GALLERY LEVEL

# AREA SCHEDULE

LEVEL	USE	NIA (SQ M)	NIA (SQ FT)
BASEMENT	RETAIL   VERSA	220   88	A: 2,370   B: 950
GROUND	RETAIL   VERSA	234   83	A: 2,520   B: 890
LEVEL ONE	WORKSPACE	508	5,470
LEVEL TWO	WORKSPACE	508	5,470
LEVEL THREE	WORKSPACE	504	5,430
LEVEL FOUR	WORKSPACE	508	5,470
LEVEL FIVE	WORKSPACE	508	5,470
LEVEL SIX	WORKSPACE	508	5,470
LEVEL SEVEN	WORKSPACE	508	5,470
LEVEL EIGHT	WORKSPACE	508	5,470
LEVEL NINE	WORKSPACE	430	4,630
LEVEL TEN	TERRACE	n/a	n/a

# LOCATION

AT THE HEART OF MANCHESTER





# SUPER CONNECTED

**TRANSMISSION IS WELL SERVED BY PUBLIC TRANSPORT - TRAIN VIA THE NEW ORDSALL CHORD TO PICCADILLY AND VICTORIA STATIONS, METRO TO DEANSGATE, FREE METROLINK TO BOTH MAINLINE STATIONS.**

Full provision for electric car parking and cycling is made within the Enterprise City masterplan.



### Train

There are five railway stations all within easy walking distance of Transmission.



### Car

A 24-hour NCP car park is located directly opposite St. John's Place, and three additional car parks are within five minutes' walk of Transmission.



### Bus

The Manchester 'free bus' service has two city-wide routes serving Transmission. All services run every 10-12 minutes, Mon-Sun.



### Air

Manchester International Airport is only a short distance from Transmission and easily accessible by car or train: driving: 23mins or by train: 25mins.



### Metrolink

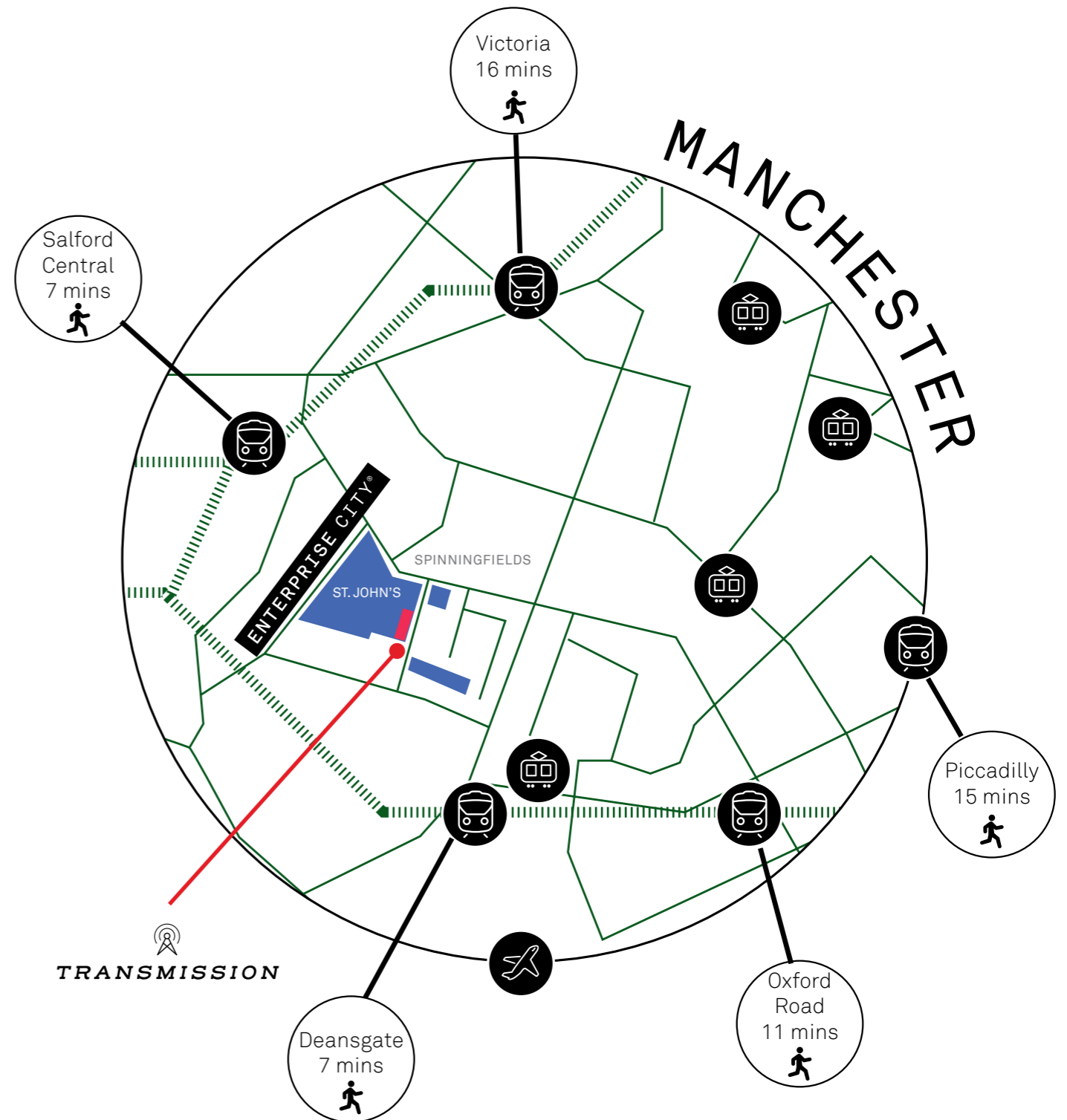
Metrolink trams run throughout Greater Manchester with three stops within walking distance of Transmission.



### Bicycle

Transmission has bike parking, storage lockers and shower facilities on site.

## WALKING TO TRANSMISSION





## CONTACT

---

LONDON  
7-8 Savile Row  
Mayfair  
London  
W1S 3PE  
T: 020 7758 4000

MANCHESTER  
Bonded Warehouse  
18 Lower Byrom Street  
Manchester  
M3 4AP  
T: 0161 834 8640

**ENTERPRISE CITY®** is a registered trademark of Allied London.

Misrepresentation Act. Allied London gives notice that (1) These particulars are a general outline only, for the guidance of prospective investors, purchasers or tenants, and do not constitute the whole or any part of an offer or contract; (2) Allied London cannot guarantee and accepts no liability whatsoever for the accuracy of any description, dimensions, references to condition, necessary permissions for use and occupation and other details contained herein and prospective purchasers or tenants must therefore not rely on them as agent, advisor or other representative statement of fact or representations and must satisfy themselves as to their accuracy; (3) No employee of Allied London has any authority to make or give any representations or warranty or enter into any contract whatever in relation to the property; (4) Rents quoted in these particulars may be subject to VAT in addition and (5) Allied London will not be liable, in negligence or otherwise, for any loss arising from the use of these particulars, (6) Space planning contained in this brochure is indicative only and may require modifications to the building design; (7) All floor plans are not to scale and are for identification purpose only and (8) all CGIs are indicative of the building and site only and are not an exact representation of the completed building. Design by Allied London 2021.

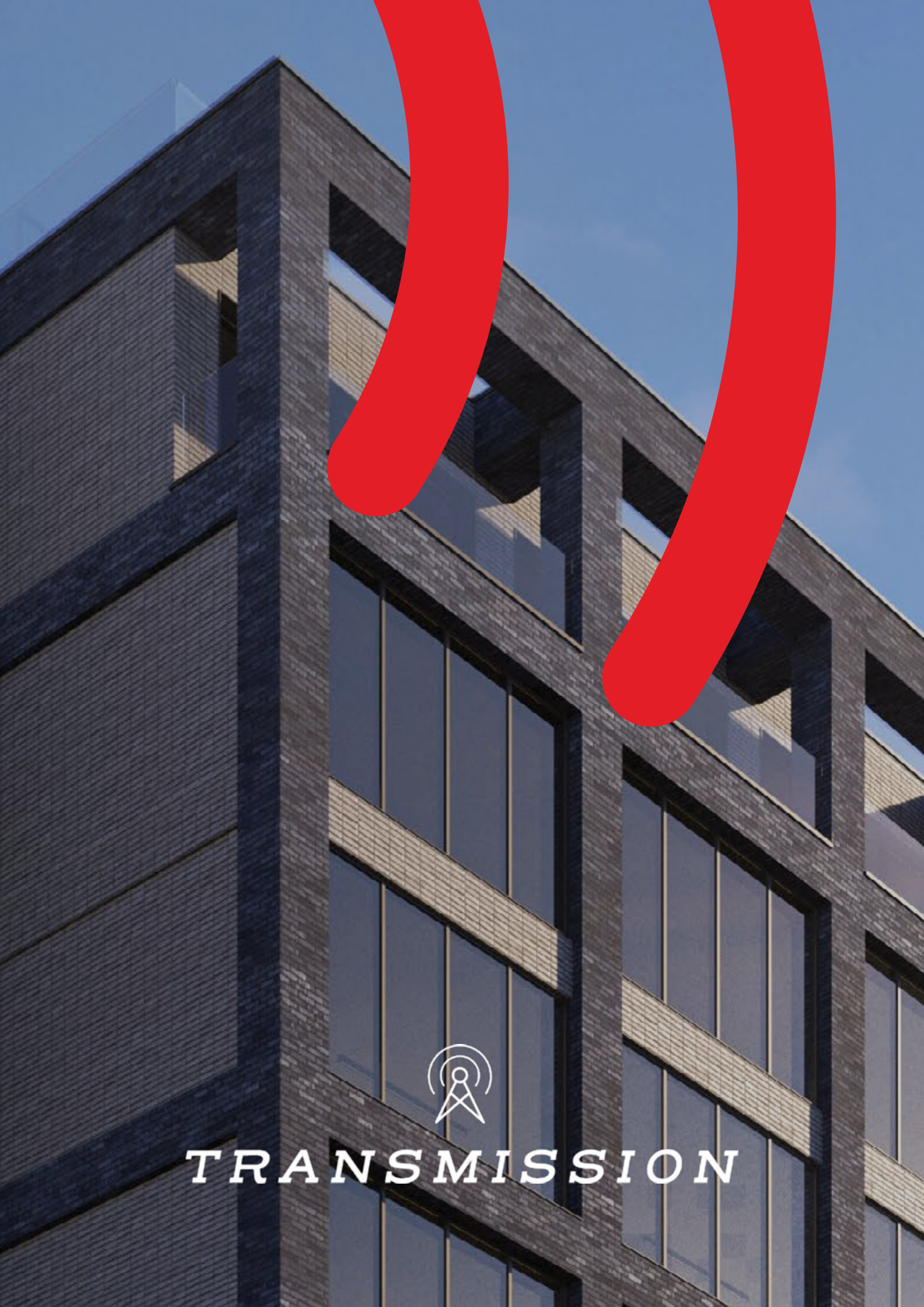


**TRANSMISSION**

**ENTERPRISE CITY®**

---

**ST. JOHN'S**



**TRANSMISSION**