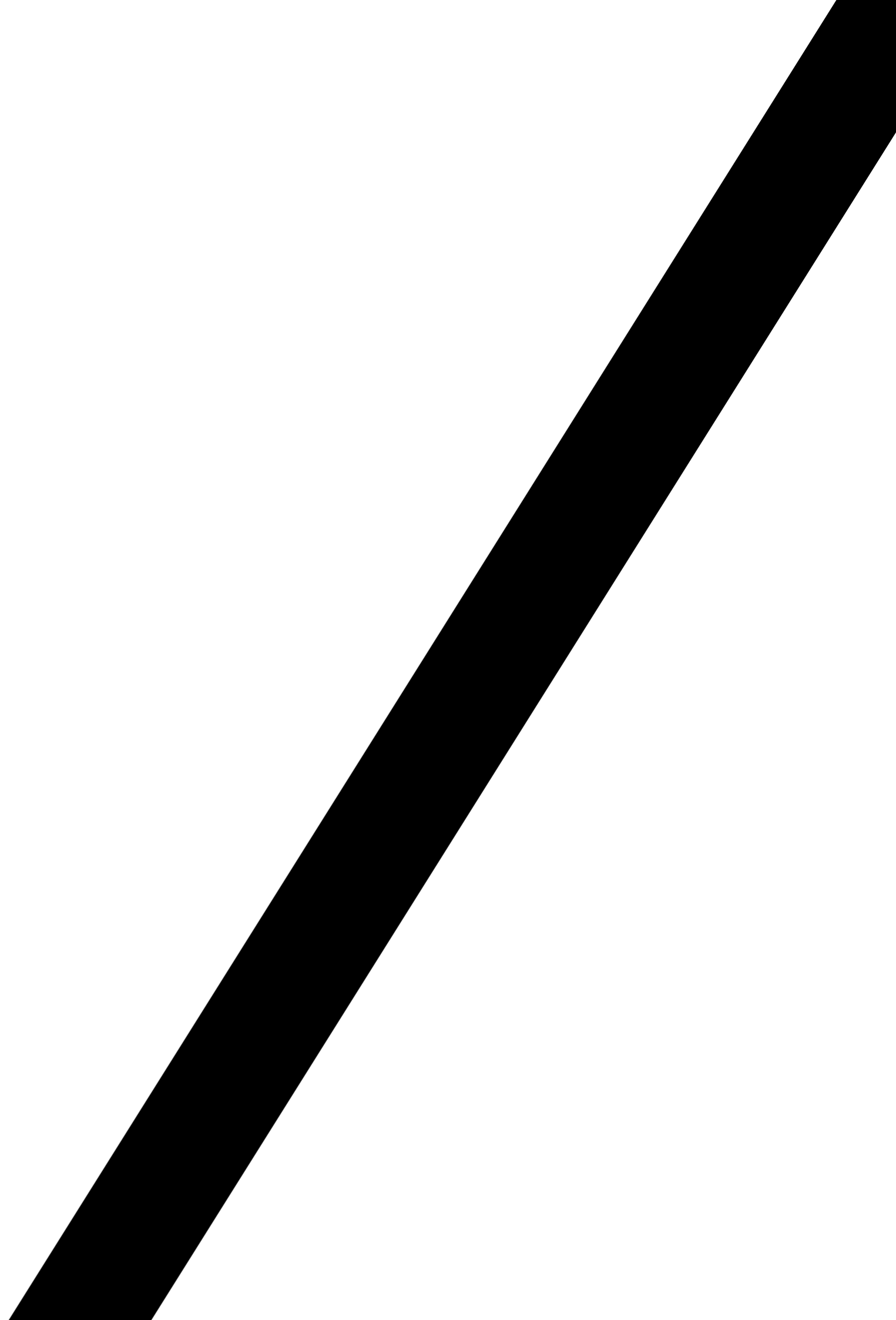



S E V E N



SPINNINGFIELDS MANCHESTER



A high-angle photograph of a modern lounge area. The room features a light-colored wooden floor. In the center, there is a circular area with a green and yellow striped rug. On this rug sits a round white marble coffee table with a small orange object on top. Surrounding the coffee table are four chairs: a grey upholstered armchair at the top, a black tufted leather chair on the left, a black tufted leather chair on the right, and a brown leather chair on the far right. A man in a brown jacket is standing in the lower center, talking on a mobile phone. Two large potted plants with broad green leaves are positioned near the windows at the top of the frame. The overall atmosphere is bright and contemporary.

XYZ:
SPACE
THAT
WORKS

XYZ

Fire exit



Spinningfields in numbers

- 170 commercial organisations
- 430 residential apartments
- 50 restaurants, bars, coffee shops, eateries & retail outlets
- Over 20,000 resident workers, with a further 6,000 within a five minute walk
- 4.5 million sq ft (418,050 sq m)
- Spinningfields estate equals £2bn worth of assets
- 15,000 average daily footfall increasing to 25,000 during events season
- ABC1 demographic
- 5.5 million visitors pa
- Combined retail & leisure spend in excess of £50m pa
- 12% of Spinningfields workers earn over £60,000 pa, 40% over 30,000 pa
- 66% of workers female
- 49% aged between 25 and 34
- 70,000 yellow card members which accounts for 40% of restaurant spend
- 100,000 followers on Spinningfields social channels
- Spinningfields.com receives 80,000 page impressions per month and a regular email newsletter is circulated to 40,000 users on the Spinningfields database

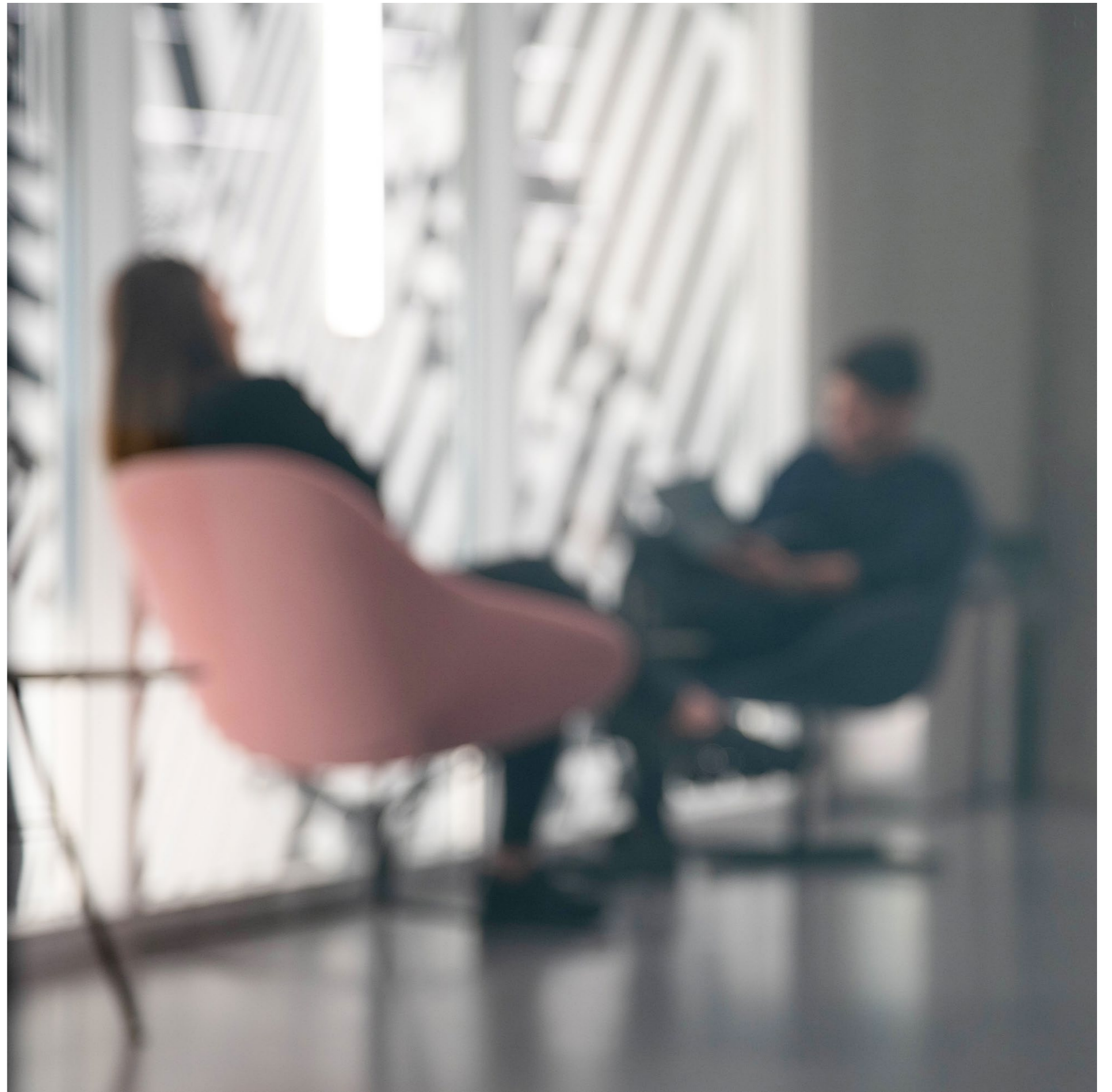
All Work & Social.

A NEW WAY OF WORKING TOGETHER.

Welcome to XYZ Work by All Work & Social. A thriving community of work and social spaces. A hub and home of tech and creative-driven start-ups, SMEs and established enterprises.

Located in the heart of Spinningfields, XYZ Work offers a vibrant work and social culture in a highly-designed, modern environment that sets the benchmark for cutting-edge co-working.

XYZ Work provides flexible, affordable memberships and spaces to grow. From hot desks through to studios and event spaces, this is a new way of working and socialising together. Read on to discover more and find out how XYZ Work could work for you.



WORK



&



SOCIAL



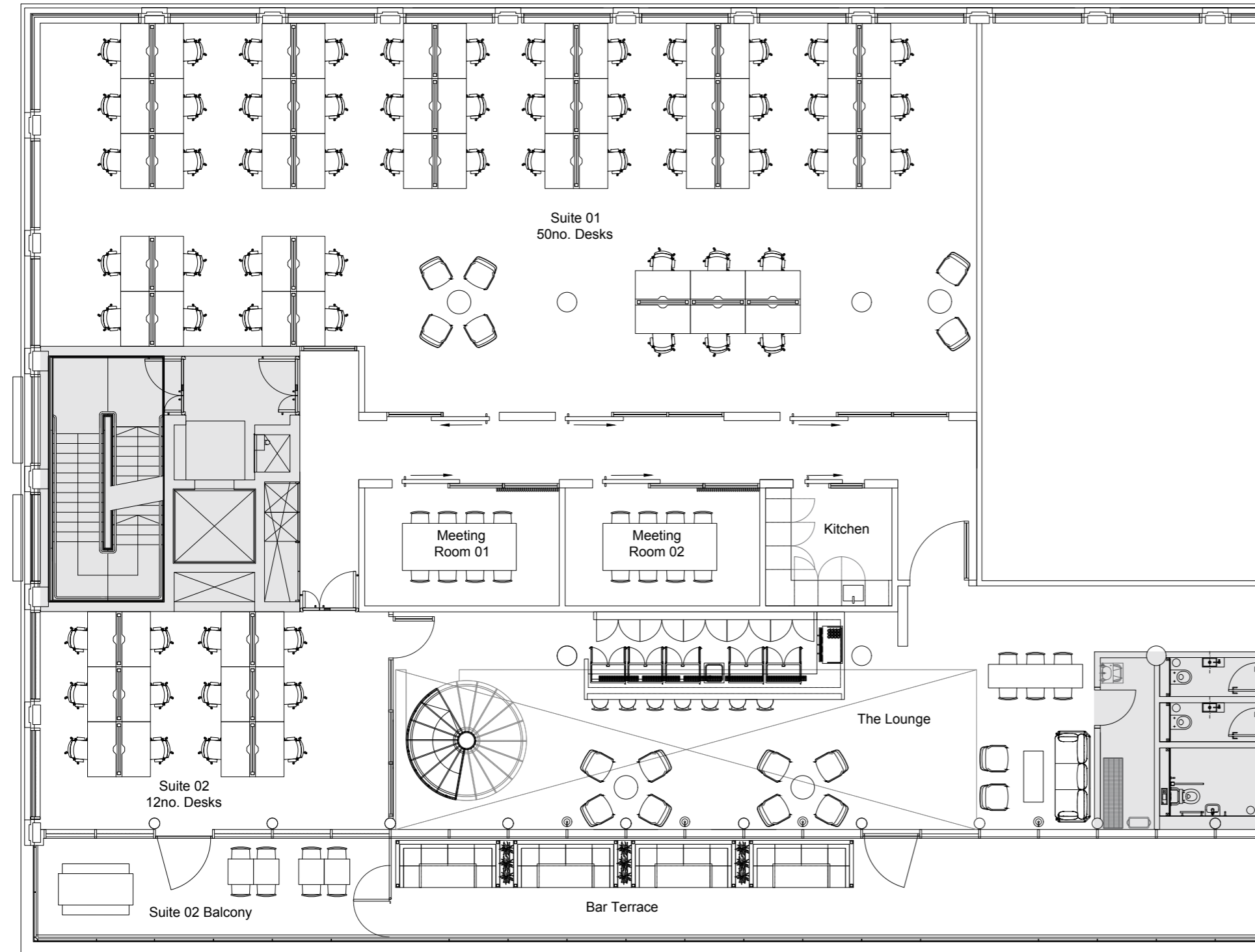
**All Work
& Social.**

XYZ - Level Seven

AREA SCHEDULE:

Workspace: 5,059 sq ft | 470 sq m

Terrace 861 sq ft | 80 sq m



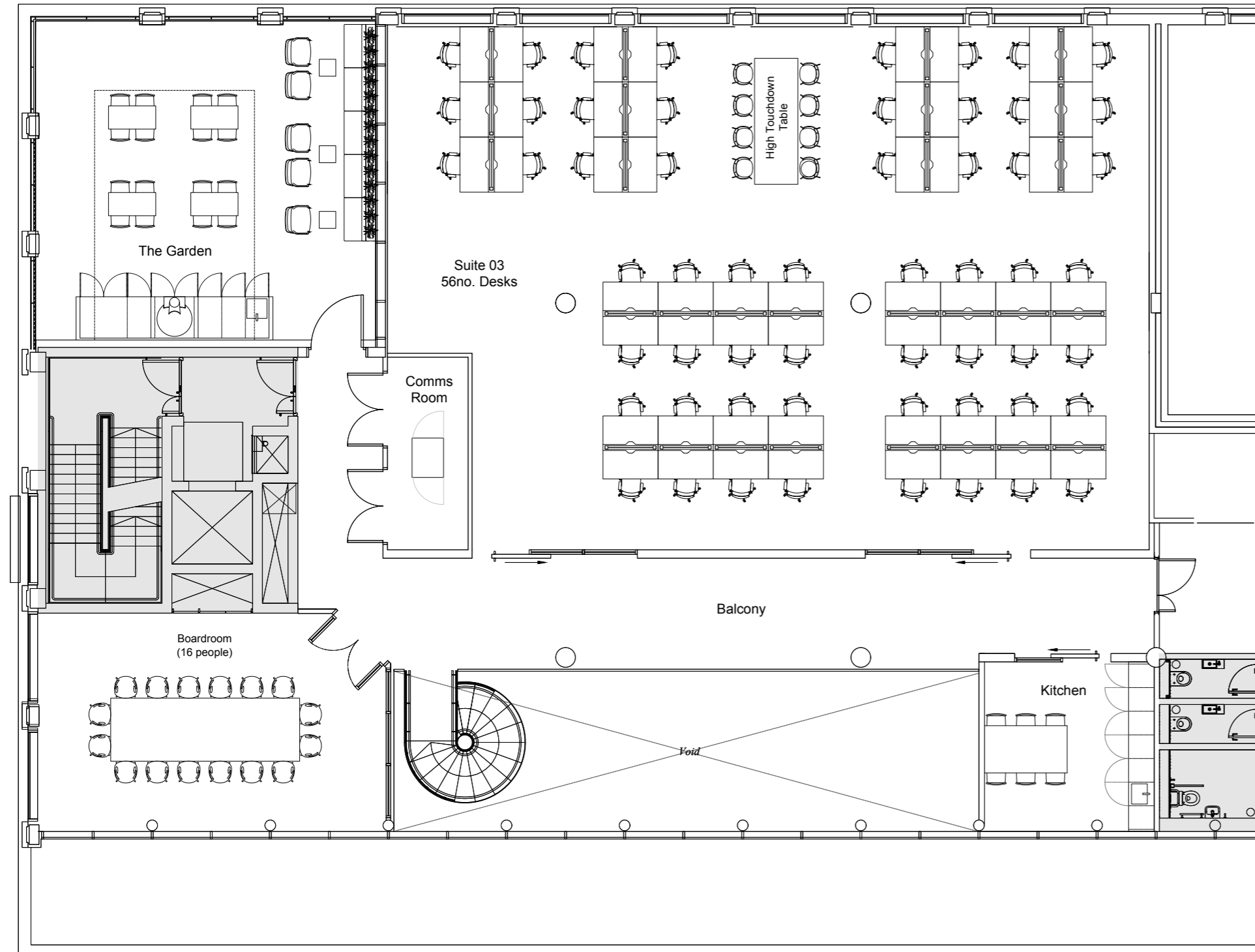
Accommodation:

- 60 workstations (1,400 x 800mm)
- Two meeting rooms (8 person)
- External terrace (30 seats)
- Private balcony
- Kitchen
- Lounge, bar & social space
- Breakout space

XYZ - Level Seven Mezzanine

AREA SCHEDULE:

Workspace: 4,284 sq ft | 398 sq m



- Accommodation:**
- 56 workstations (1,400 x 800mm)
 - One boardroom (16 person)
 - Private balcony
 - Kitchen
 - Social space

Level Seven & Mezzanine

- Total space: 9,338 sq ft
- Fully fitted workspace that can be furnished to suit your layout
- Dedicated meeting space, your own social space with garden and terrace space
- Ready for immediate occupation
- Opportunity for your own lift access









XYZ LOUNGE & BAR



XYZ WORKSPACE

XYZ

7 SEVEN

SPINNINGFIELDS MANCHESTER

CONTACT

LONDON
7-8 Savile Row
London
W1S 3PE
T: 020 7758 4000

MANCHESTER
No.1 Spinningfields
Manchester
M3 3EB
T: 0161 834 8640

OBI

WILL LEWIS
OBI PROPERTY LTD
80 MOSLEY STREET
MANCHESTER
M2 3FX

Misrepresentation Act. Allied London gives notice that (1) These particulars are a general outline only, for the guidance of prospective investors, purchasers or tenants, and do not constitute the whole or any part of an offer or contract; (2) Allied London cannot guarantee and accepts no liability whatsoever for the accuracy of any description, dimensions, references to condition, necessary permissions for use and occupation and other details contained herein and prospective purchasers or tenants must therefore not rely on them as agent, advisor or other representative statement of fact or representations and must satisfy themselves as to their accuracy; (3) No employee of Allied London has any authority to make or give any representations or warranty or enter into any contract whatever in relation to the property; (4) Rents quoted in these particulars may be subject to VAT in addition and (5) Allied London will not be liable, in negligence or otherwise, for any loss arising from the use of these particulars, (6) Space planning contained in this brochure is indicative only and may require modifications to the building design; (7) All floor plans are not to scale and are for identification purpose only and (8) all CGIs are indicative of the building and site only and are not an exact representation of the completed building. Design by Allied London 2020.

XYZ

7 SEVEN

SPINNINGFIELDS MANCHESTER

7

S E V E N

X Y Z